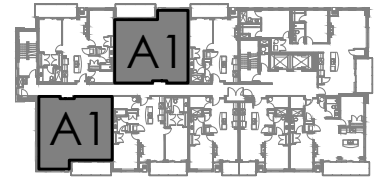


8 STOREY MIXED USE BUILDING  
**FOURTEEN PRINCESS**

14 Princess Street West, Waterloo, Ontario

**FOURTEEN**  
**PRINCESS**

SUITE QUANTITY	
2nd Floor	0
3rd Floor	2
4th Floor	2
5th Floor	2
6th Floor	2
7th Floor	0
<b>TOTAL</b>	<b>8</b>



KEY PLAN



**SUITE A1 (2 BEDROOM)**

UNIT AREA 95.36/92.57sq.m. (1,026.44/996.41sq.ft.)  
 BALCONY AREA - FLOOR 3 44.38/68.08sq.m. (477.07/732.81sq.ft.)  
 BALCONY AREA - FLOORS 4-6 9.17sq.m. (98.70sq.ft.)

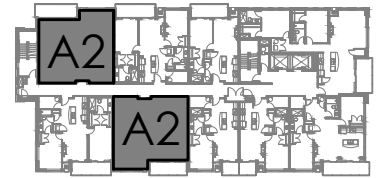


8 STOREY MIXED USE BUILDING  
**FOURTEEN PRINCESS**

14 Princess Street West, Waterloo, Ontario

**F O U R T E E N**  
**P R I N C E S S**

SUITE QUANTITY	
2nd Floor	0
3rd Floor	2
4th Floor	2
5th Floor	2
6th Floor	2
7th Floor	0
<b>TOTAL</b>	<b>8</b>



KEY PLAN



**SUITE A2 (2 BEDROOM)**

UNIT AREA 95.95/94.89sq.m. (1,032.80/1,021.39sq.ft.)

BALCONY AREA - FLOOR 3 102.00/31.41sq.m. (1097.92/338.10sq.ft.)

BALCONY AREA - FLOORS 4-6 9.76/8.60sq.m. (105.06/92.57sq.ft.)

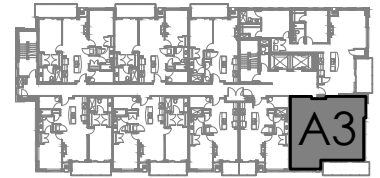


8 STOREY MIXED USE BUILDING  
**FOURTEEN PRINCESS**

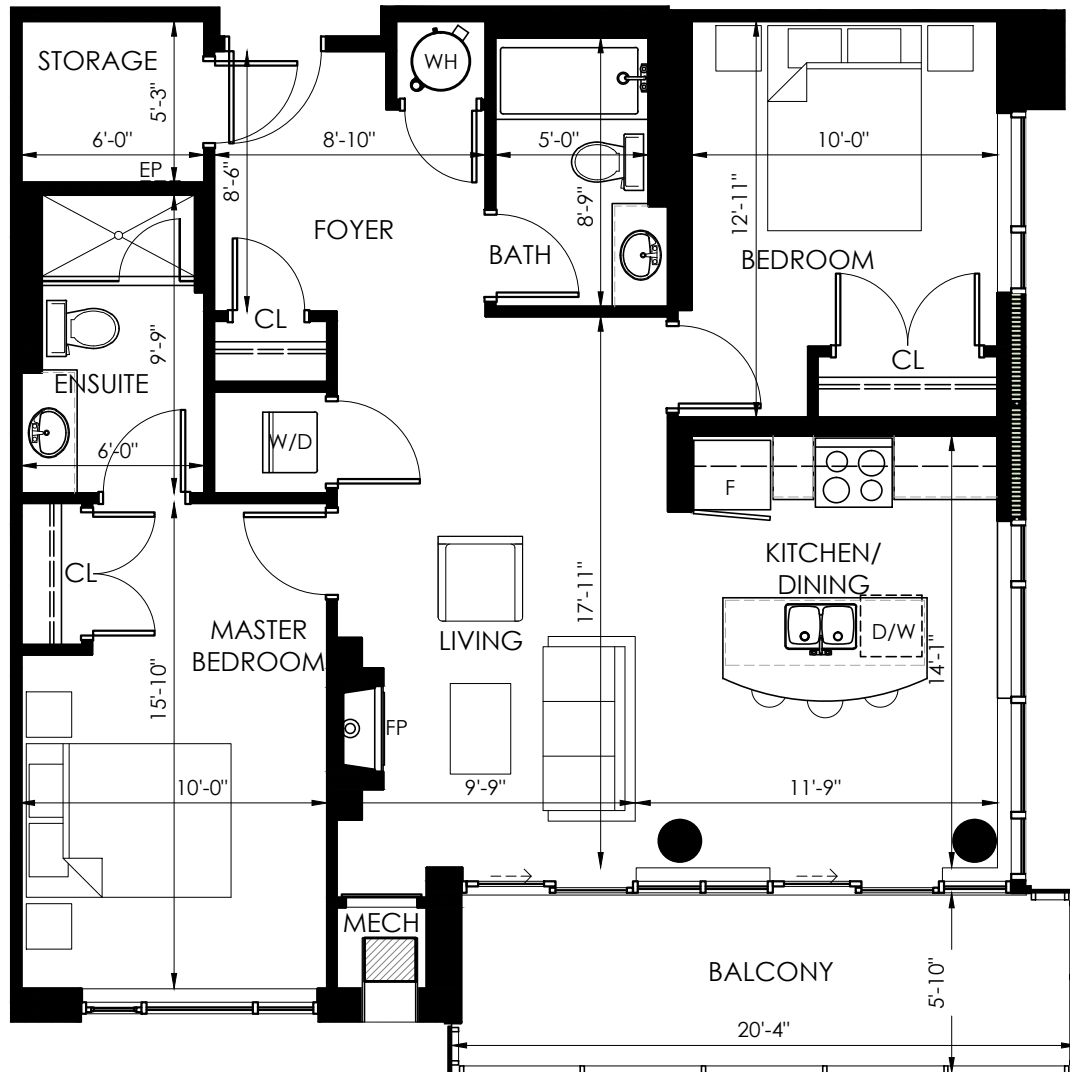
14 Princess Street West, Waterloo, Ontario

**FOURTEEN**  
**PRINCESS**

SUITE QUANTITY	
2nd Floor	1
3rd Floor	1
4th Floor	1
5th Floor	1
6th Floor	1
7th Floor	0
<b>TOTAL</b>	<b>5</b>



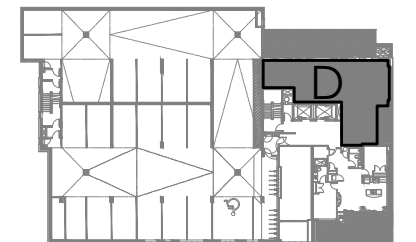
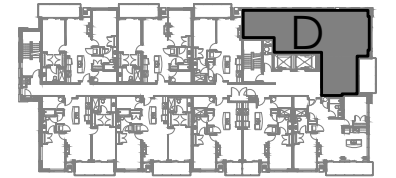
KEY PLAN



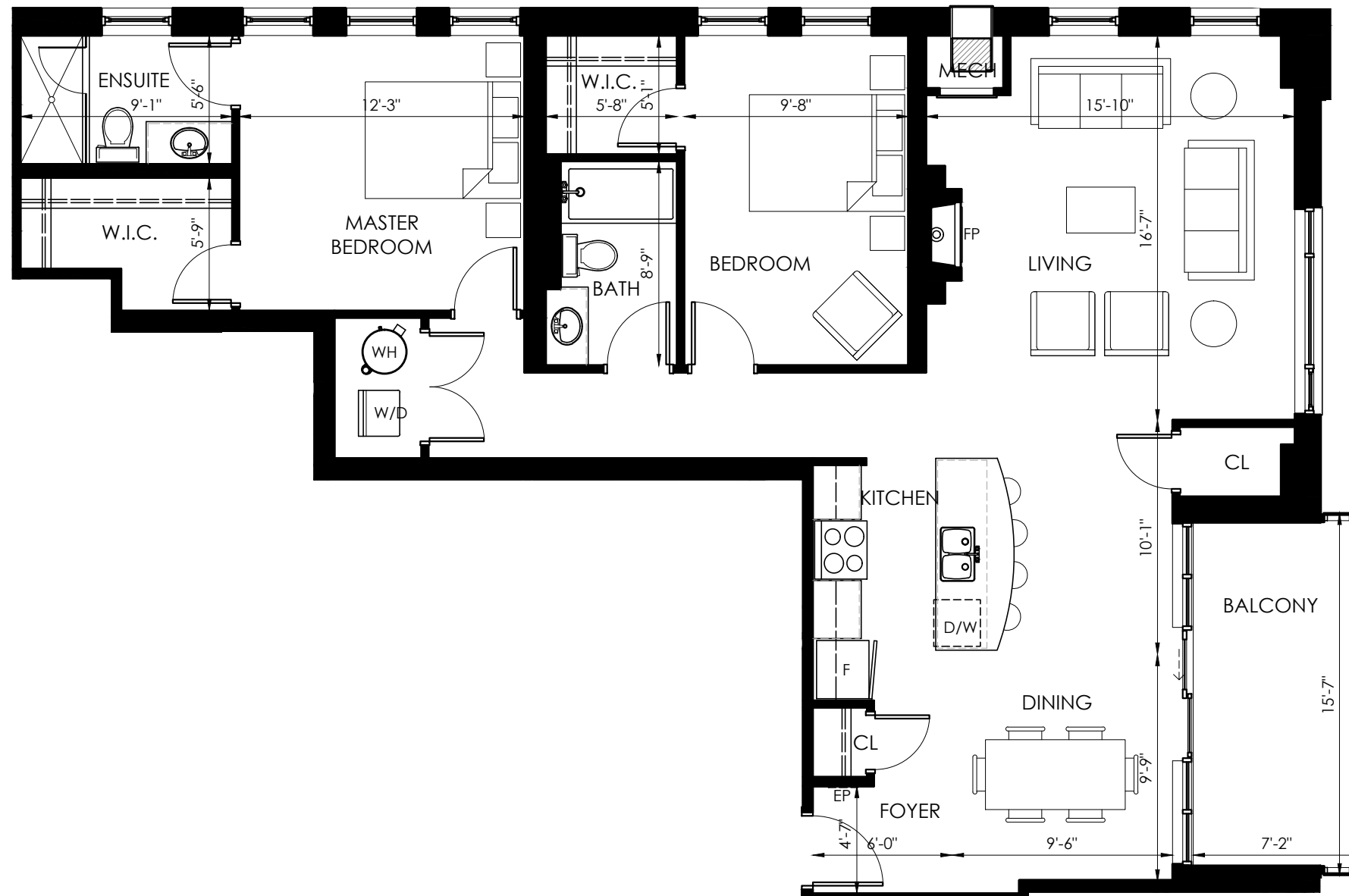
**SUITE A3 (2 BEDROOM)**

UNIT AREA 94.38sq.m. (1,015.90sq.ft.)  
 BALCONY AREA - FLOOR 2 31.73sq.m. (341.54sq.ft.)  
 BALCONY AREA - FLOORS 3-6 10.84sq.m. (116.68sq.ft.)





**KEY PLAN**

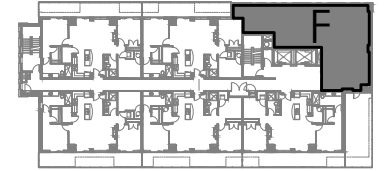


SUITE QUANTITY	
2nd Floor	1
3rd Floor	1
4th Floor	1
5th Floor	1
6th Floor	1
7th Floor	0
<b>TOTAL</b>	<b>5</b>



**SUITE D (2 BEDROOM)**

UNIT AREA 126.56/126.64sq.m. (1,362.28/1,363.14sq.ft.)  
 BALCONY AREA - FLOOR 2 45.97+6.25sq.m. (494.82+62.27sq.ft.)  
 BALCONY AREA - FLOORS 3-6 9.83sq.m. (105.81sq.ft.)



**KEY PLAN**

SUITE QUANTITY	
2nd Floor	0
3rd Floor	0
4th Floor	0
5th Floor	0
6th Floor	0
7th Floor	1
<b>TOTAL</b>	<b>1</b>



**SUITE F (2 BEDROOM)**

UNIT AREA 137.98sq.m. (1,485.20sq.ft.)  
 BALCONY AREA 35.21sq.m. (379.00sq.ft.)